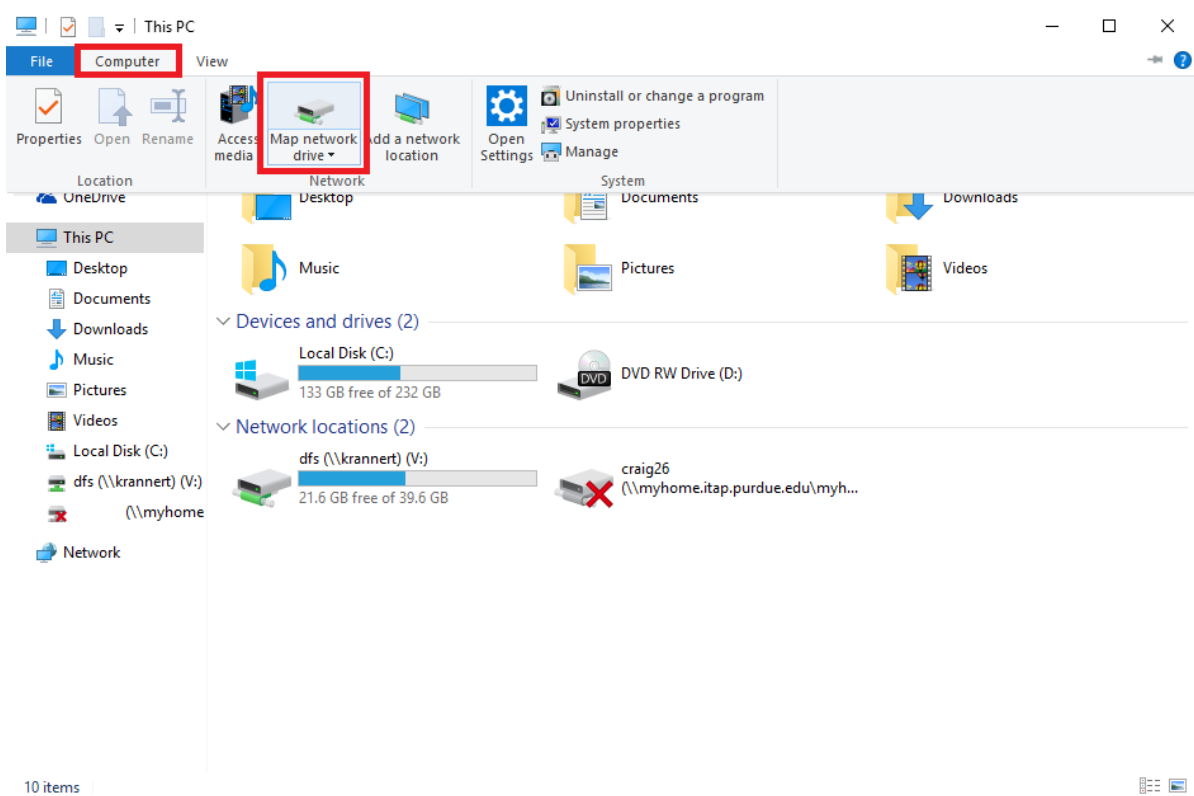




MAPPING A NETWORK DRIVE AWAY FROM KRANNERT ON WINDOWS 10

This manual lists instructions how to map a network drive when not on the Krannert Domain.

- 1) Press the **Windows Key + E** to open File Explorer
- 2) Near the top of the window, select the **Computer** tab, and click "**Map network drive**"

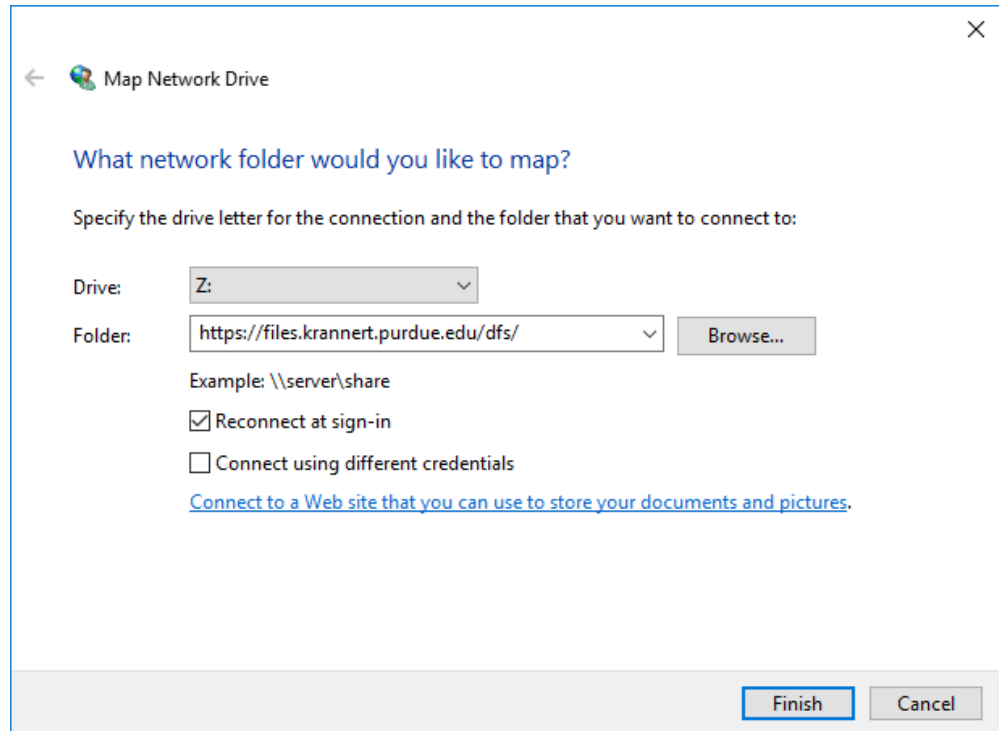




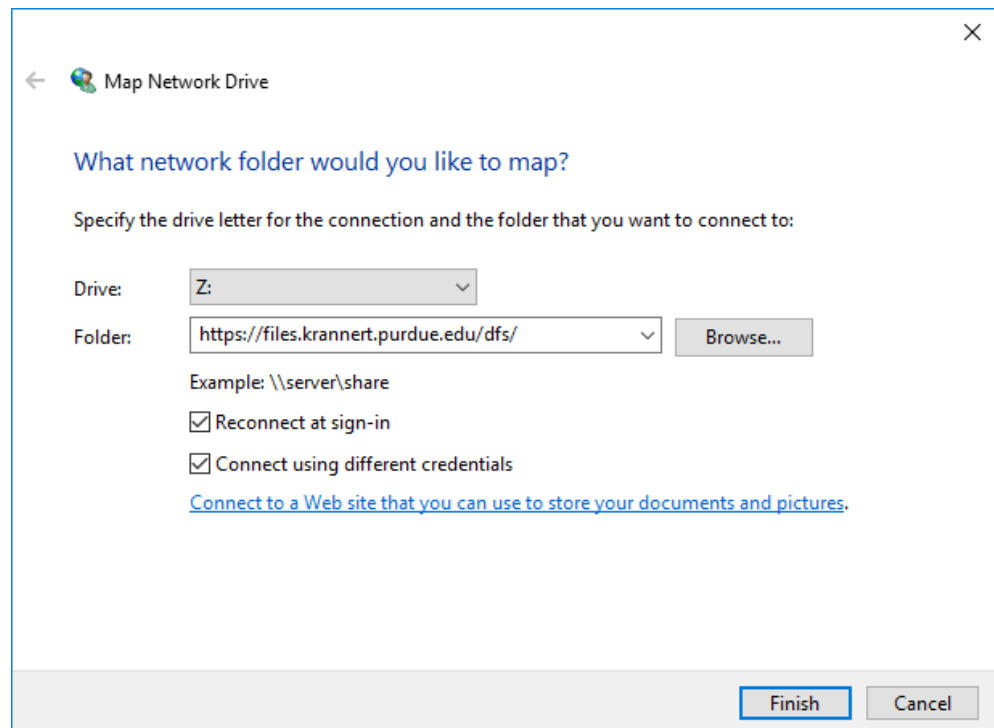
- 3) Select desired Drive letter in the “**Drive:**” drop down box. From there enter path in “**Folder:**”

For V: Drive enter <https://files.krannert.purdue.edu/DFS/>

Click on "Reconnect at login".

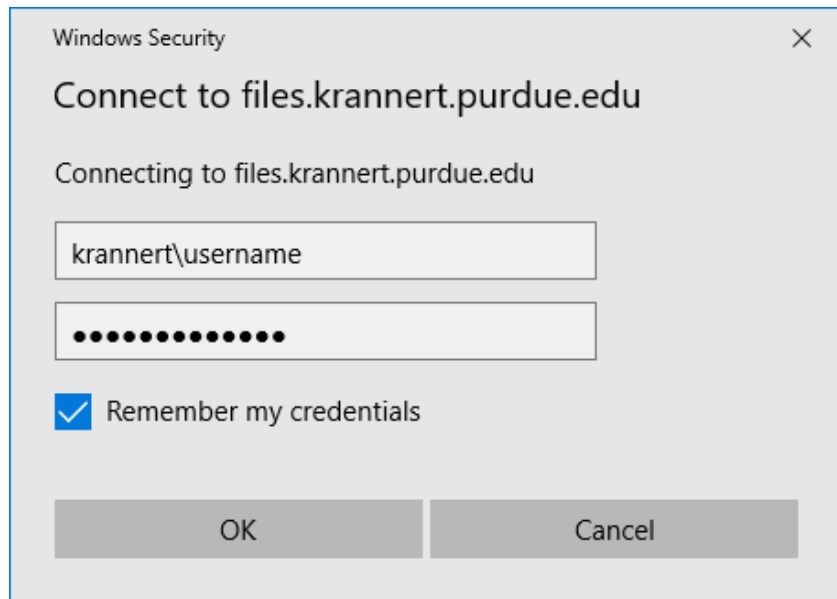


- 4) On Krannert computers away from campus or Krannert laptops just click on **Finish**. All others click on “Connect using different credentials”, *then* click **Finish**.

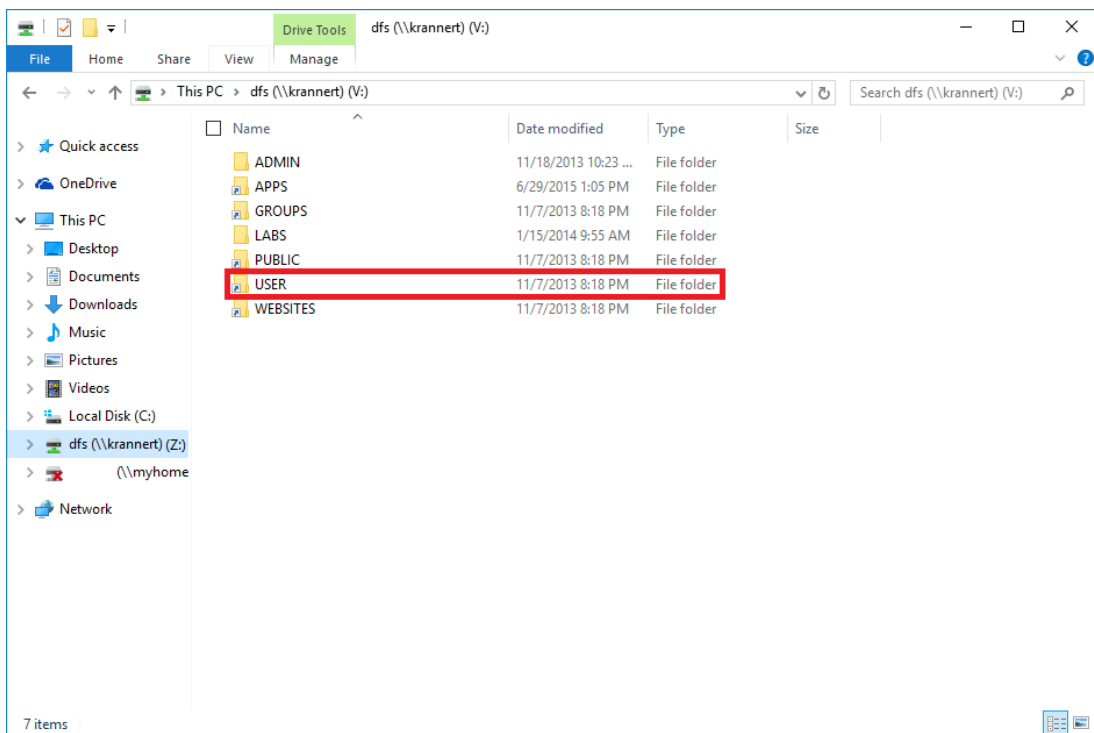




- On Krannert computers away from campus or Krannert laptops, just enter user name and password. All other computers, preface username with "Krannert\"".

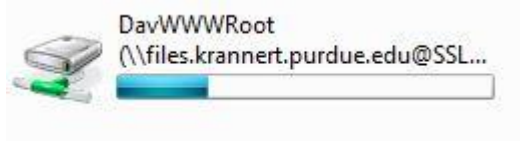


- You have successfully mapped a network drive away from the Krannert Domain. To access your U: Drive, go into the "USER" folder and open your username's folder.





7) The default displayed name is not very descriptive:



You can change the displayed name by right clicking on the drive in the drive list and select rename.

