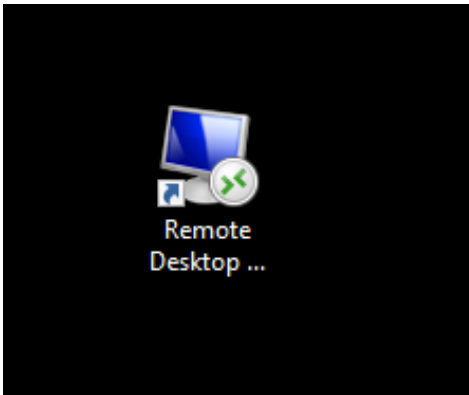
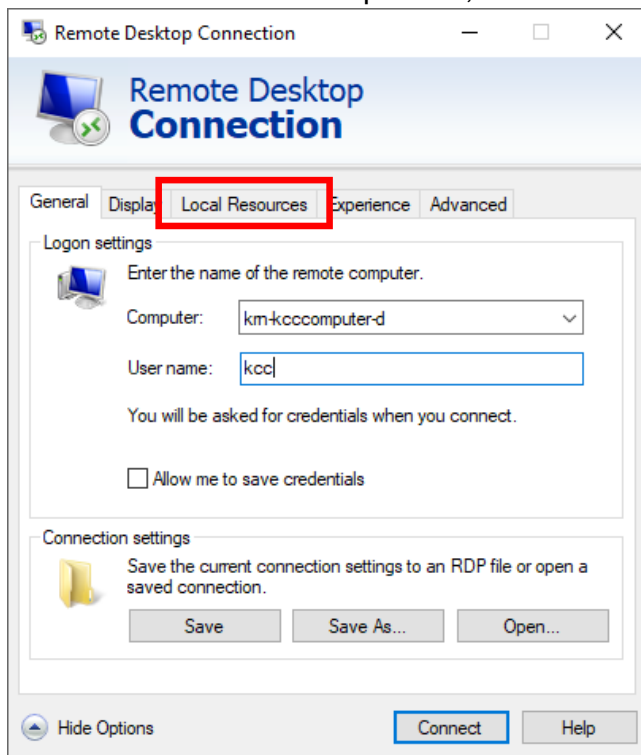


## How to Enable/Disable Printer Redirection in Remote Desktop

- 1) Right click the rdp file that you downloaded from <https://kcc.krannert.purdue.edu/rdpconfig> and choose Edit

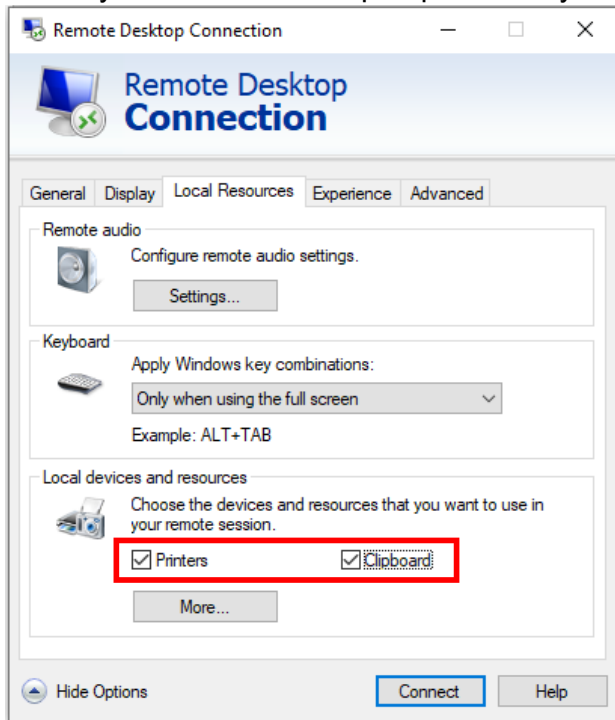


- 2) Within the Remote Desktop Menu, click on the **Local Resources** tab

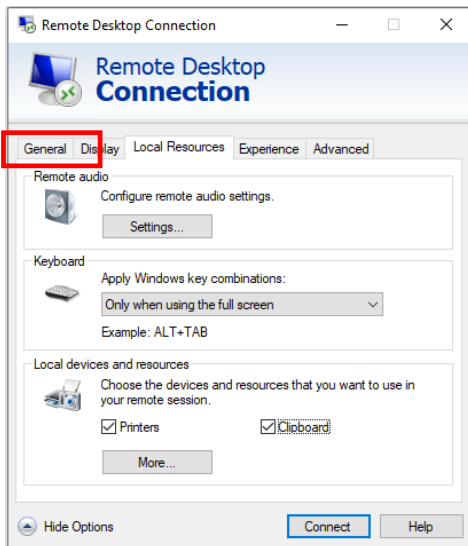


## How to Enable/Disable Printer Redirection in Remote Desktop

- 3) Within the Local Resources tab, click on the **Printers and Clipboard** boxes. This allows your remote desktop to print from your home printer.



- 4) Click on the **General** Tab



## How to Enable/Disable Printer Redirection in Remote Desktop

- 5) Within the General tab, click **Save** to save the setting

